



DPI-8S & DOT^{3D} PRO

HANDHELD . EASY . PROFESSIONAL



OVERVIEW

The Dot Product high-performance handheld easy-to-use solution for capturing 3D data, designed for mobile professionals who need high-quality spatial data, instantly.

The **DPI-8S** and **DPI-8S SR** are handheld 3D data capture running on a tablet, able to provide a real-time feedback about the quality of your work.

From 2018 it is also possible turn your Windows tablet or PC into a handheld 3D Scanner by install the **DOT3D Scanning software** and integrate a **Intel® RealSense™** (D415, D435 & D410)

The Dot Product DPI data can be perfectly processed with Reconstructor® for advanced deliverables, and **easily integrate with Reconstructor®**, ReCap360®, Rhinoceros® and more.

MAIN INDUSTRIES

ENGINEERING	PRODUCT DESIGN	CRIME SCENE	INDUSTRIAL FACILITIES
ELECTRICAL UTILITIES	HERITAGE	ARCHITECTURE	CLOSE RANGE DETECTION

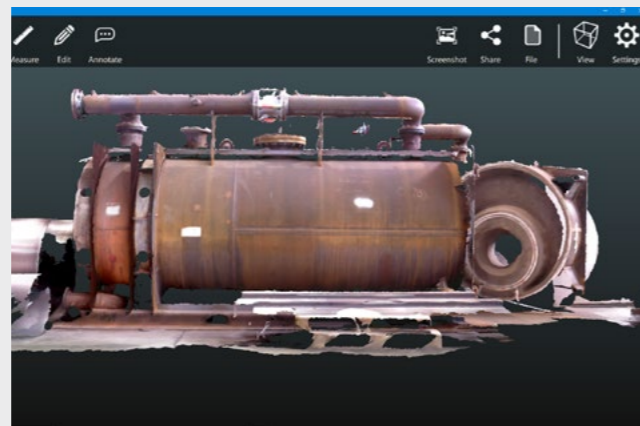


HANDHELD 3D DATA CAPTURE ON A TABLET

The **DPI-8S** (2-12 ft range) and **DPI-8S SR** (for close-proximity 1-6 ft range) are completely self-contained, handheld 3D scanning kit, composed by an all-in-one hardware and software scanner to instantly capture colour 3D data with full freedom of motion. The Dot Product solution produce accurate and reliable results in complex environments, review and edit your point cloud data immediately on the tablet, Export directly to compressed DP format (PTS, PTX, PLY, PTG, E57, LAS, LAZ, & POD) and it's directly compatible with the Light Kit, Pole Kit, and Accuscale-DP Kit.

What is included:

- SAMSUNG GALAXY TAB S2 TABLET WITH 3GB OF MEMORY FOR LARGER SCENE CAPTURE.
- ACCESS TO THE TABLET'S 8MP CAMERA FOR CAPTURE OF HD PICTURES WHILE SCANNING (ENABLED IN THE NEW DOT^{3D} PRO).
- LIGHTER TOTAL WEIGHT IN NEWLY DESIGNED HOUSING.
- 8.0" 2048X1536 (QXGA) SAMOLED TOUCHSCREEN DISPLAY.
- 32 GB NATIVE STORAGE, GOOD FOR UP TO 10,000 SCANS IN COMPRESSED DP FORMAT.
- 1 LICENSE OF DOT3D PRO PRE-INSTALLED ON THE TABLET - PERPETUAL OR 3-YEAR OPTIONS.



DOT^{3D} PRO (3D SCANNING SOFTWARE)

Thanks to Dot^{3D} Pro, you can NOW turn your tablet into a 3D scanner to capture, measure, crop, annotate and more!
 Four license option and yearly fee plans available.
 *Only supported for scans from Dot3D Scan Pro or Phi.3D

	VIEW	EDIT	SCAN	PRO
Intel RealSense 3D scanning			Up to 20 Million Point/Scans	Unlimited
HD Photo Capture			Up to 3 Photos/Scans	Unlimited
Available on Windows & Android	✓	✓	Android	✓
3D Cropping	✓	✓	✓	✓
3D Annotation (3D point)	✓	✓	✓	✓
3D Measurement (Point to Point)	✓	✓	✓	✓
Screenshot	✓	✓	✓	✓
Optimization (Single scan)	✓	✓	✓	✓
Batch optimization (Multi scan)		✓	✓	✓
Advance measurement		✓	✓	✓
User coordinate setting		✓	✓	✓
HD Photo export		✓	✓	✓
DP, PTS, PLY Export		✓	✓	✓
E57, RCS, LAS, LAZ, POD, PTX, PTG Export		✓		✓
Plane & Cylinder annotation		✓		✓
InfiPoints DP Integration (Android)		✓		✓
Perpetual/FlexNet licensing option		✓		✓
Scale bar (Distance) Targeting		SP/P3D*		✓
Hard (Survey) Targeting		SP/P3D*		✓
Brunson AccuScale - DP Targeting		SP/P3D*		✓
Parallel Plane Constrains		SP/P3D*		✓
Append (Link multiple scans)				✓
In-Field Calibration				✓

CONTACTS

phone: (+39) 030 65 95 001

fax: (+39) 030 65 95 020

e-mail: info@gexcel.it | sales@gexcel.it

web: www.gexcel.it



© Gexcel Srl. All the Gexcel's trade names are registered trademarks and all rights are reserved.
Other trademarks and trade names are those of their respective owners.